



CROSSING THE RHINE RIVER - March, 1945

This picture was snapped from the truck just as we were rolling onto the pontoon bridge to start across.

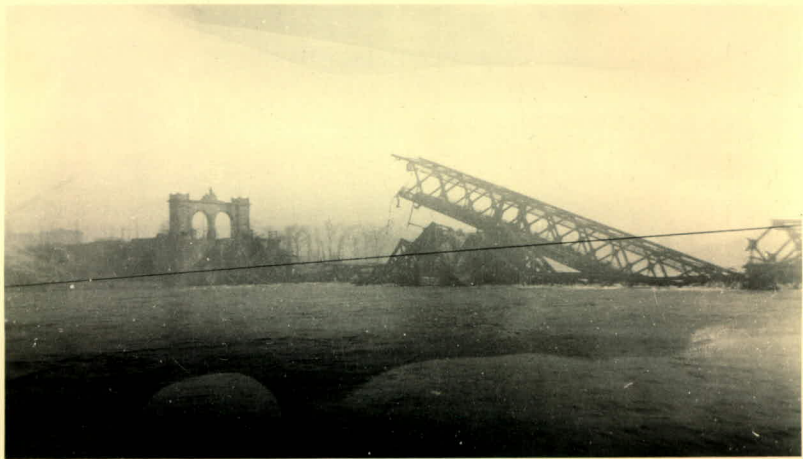
There was a pretty heavy smoke screen still down when these pictures were taken, but you can still make out the dim outline of Mannheim over on the other side of the river.



✓ Crossing The Rhine - Mar., 1945

This was taken when we were about halfway across the river, looking back towards Ludwigshaven, which you can see the outline of in the distance.

(That's McFadden perched precariously on the left side of that truck behind us (right side facing ^{from} this way.) (And that's Richard's head sticking up in the bottom right corner of the picture.)



✱ Crossing The Rhine - March, 1945

This is why we had to cross on a pontoon bridge. That pile of junk looked like it might have been a beautiful bridge at one time. (That's The Mannheim entrance to the bridge at the left.)